



Recommended Sets
pages 1-4



Harvesting Cannulas
page 5



Injectors and Micro Injectors
page 6



Specialty and Lipo Cannulas
pages 7-8



Instrument Connections
page 9



Universal Power Injector
page 10



GEMS Single-Use Instruments
pages 11-14



NanoTransfer
page 15



Transfers and Emulsification
page 16



Syringe Instruments
pages 17-18



Centrifugation and Crowns
pages 19-21



Large Volume Decanting
page 22



Cleaning and Storage
page 23

Delivering the benefits
of fat to millions...

Reusable Instrument Sets

Considered by surgeons worldwide to be the ideal sets for successful fat grafting. The Gold Standard Sets feature Tulip's patented SuperLuerLok hub and proprietary CellFriendly™ Technology.



The Tulip Gold Standard Facial Set™

This complete set contains Tulip's patented SuperLuerLok hub and proprietary CellFriendly cannulas to harvest and re-inject adipose tissue. This set includes a Tumescant Infiltrator and a Sorensen Harvester with 1mm micro-ports to harvest tissue that is compatible with Tulip's three micro injectors:

- The Tulip Injector 0.7mm x 4cm (for the periorbital region)
- The Tulip Injector 0.9mm x 5cm (for the midface, lips, and temple)
- The Tulip Injector 1.2mm x 7cm (for the mandibular region)

The Tulip Injector is designed with a blunt tip to pass through soft tissue easily without the trauma or potential risks that are involved with sharp needles.

Note: Other harvesters can be substituted for the Sorensen Harvester. Please call 800-325-6526 to request this option when ordering.

- | | |
|--------|---|
| 1 each | Tumescant Infiltrator SuperLuerLok 2.1mm x 20cm |
| 1 each | Sorensen Harvester SuperLuerLok 2.4mm x 20cm |
| 1 each | Tulip Micro Injector SuperLuerLok 0.7mm x 4cm |
| 1 each | Tulip Micro Injector SuperLuerLok 0.9mm x 5cm |
| 1 each | Tulip Micro Injector SuperLuerLok 1.2mm x 7cm |
| 1 each | JohnnieLok BD 10cc |
| 1 each | JohnnieLok BD 20cc |
| 1 each | Decant Stand & Anaerobic Transfer Luer to Luer |



NanoTransfer Set™ Generation I

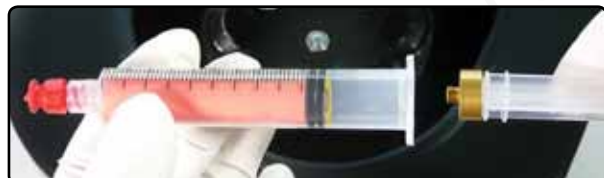
- | | |
|---------|--------------------------------|
| 1 each | NanoTransfer Generation I |
| 10 each | Sterile NanoTransfer Cartridge |
| 1 each | Sizing Transfer 1.2mm |
| 1 each | Sizing Transfer 1.4mm |
| 1 each | Anaerobic Transfer 2.4mm |



Tulip NanoSpin Crown Kit™

Everything you need to get spinning with Tulip's revolutionary advanced closed-system tissue processing.

- The Tulip NanoSpin with 8-place rotor
- Eight reusable Tulip Crowns for 10cc BD Syringes
- 10cc Luer BD Syringes - box of 100
- Red Luer Tip Caps for Centrifuge, 10 sterile packs of 10 (100)



Single-Use Kits



SoftTouch Micro Kit™ Five Patients

This single-use closed system helps size adipose tissue down to Microfat so that it is injectable with Tulip Injectors.

Sets for 5 Procedures Includes:

- 5 each Single-Use Sizing Transfer 1.2mm
- 5 each Single-Use Sizing Transfer 1.4mm
- 5 each Single-Use Anaerobic Transfer 2.4mm



True NanoFat™ Five Patients

Tulip's Patent-Pending NanoTransfer. The proprietary closed system delivers adipose tissue that is injectable with 27g and 30g needles.

Sets for 5 Procedures Includes:

- 5 each NanoTransfer Generation II
- 5 each Single-Use Sizing Transfer 1.2mm
- 5 each Single-Use Sizing Transfer 1.4mm
- 5 each Single-Use Anaerobic Transfer 2.4mm

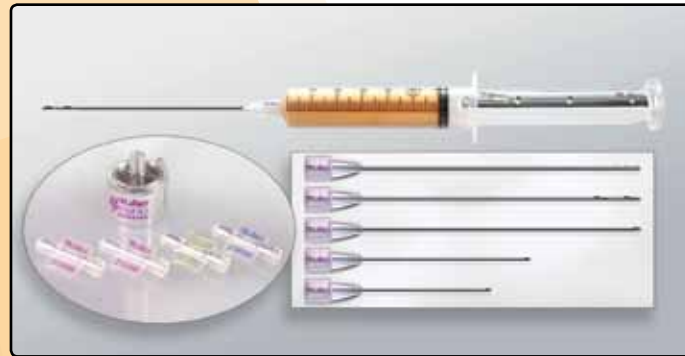


SoftBreast Microfat™

New! Introducing the SoftBreast Microfat Kit for Personalized Breast Enhancement

The SoftBreast system uses the patient's own fat tissue to correct asymmetries, improve cleavage and add a natural soft look to the augmented breast.

- 1 each GEMS Tumescence Infiltrator 2.1mm x 15cm
- 2 each GEMS Miller Speed Harvester 2.1mm x 15cm
- 1 each GEMS Spoon Tip Injector 2.1mm x 15cm
- 1 each GEMS Tulip Injector 1.4mm x 9cm
- 1 each GEMS Tulip Injector 1.2mm x 7cm
- 2 each Miller OneSnap 60cc
- 2 each Single-Use Anaerobic Transfer 2.4mm
- 4 each Harvesting Syringes 60cc BD
- 6 each Harvesting Syringes 10cc BD
- 6 each Injection Syringes 1cc BD



SoftBreast Microfat + TNF™

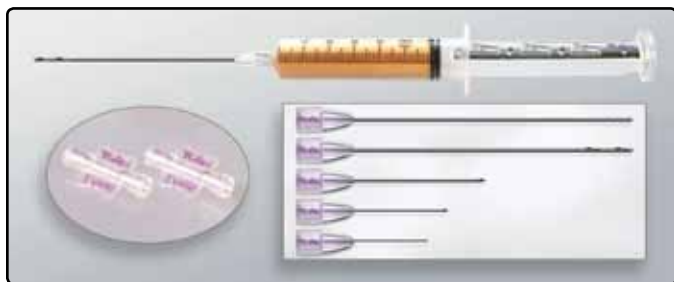
New! Introducing the SoftBreast Microfat + TNF Kit for Personalized Breast Enhancement

The SoftBreast system uses the patient's own fat tissue to correct asymmetries, improve cleavage and add a natural soft look to the augmented breast. TNF for the Décolletage in the aging patient completes the total Personalized Breast Enhancement procedure.

- 1 each GEMS Tumescence Infiltrator 2.1mm x 15cm
- 2 each GEMS Miller Speed Harvester 2.1mm x 15cm
- 1 each GEMS Spoon Tip Injector 2.1mm x 15cm
- 1 each GEMS Tulip Injector 1.4mm x 9cm
- 1 each GEMS Tulip Injector 1.2mm x 7cm
- 2 each Miller OneSnap 60cc
- 1 each NanoTransfer Generation II
- 1 each Single-Use Sizing Transfer 1.2mm
- 1 each Single-Use Sizing Transfer 1.4mm
- 2 each Single-Use Anaerobic Transfer 2.4mm
- 4 each Harvesting Syringes 60cc BD
- 6 each Harvesting Syringes 10cc BD
- 6 each Injection Syringes 1cc BD



Single-Use Procedure Kits



SoftTouch Microfat™

The SoftTouch system uses the patient's own fat tissue ideal for several types of autologous grafting procedures. Select the kit by harvesting cannula.

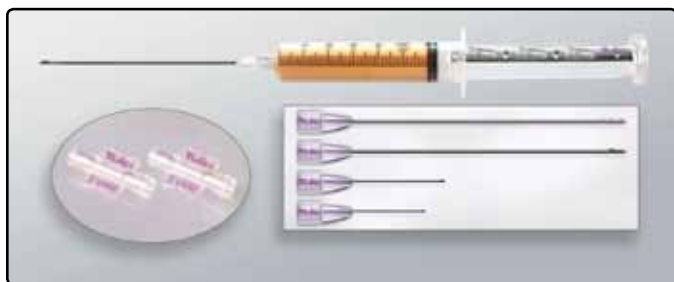


SoftTouch Carraway Microfat™



SoftTouch Miller Microfat™

- 1 each GEMS Tumescent Infiltrator 2.1mm x 15cm
- 2 each GEMS Carraway or Miller Speed Harvester 2.4mm x 15cm
- 1 each GEMS Tulip Injector 0.7mm x 4cm
- 1 each GEMS Tulip Injector 0.9mm x 5cm
- 1 each GEMS Tulip Injector 1.2mm x 7cm
- 1 each Johnnie Snap 60cc
- 1 each Single-Use Sizing Transfer 1.2mm)
- 1 each Single-Use Sizing Transfer 1.4mm
- 2 each Single-Use Anaerobic Transfer 2.4mm)
- 2 each Harvesting Syringes 60cc BD
- 2 each Harvesting Syringes 10cc BD
- 4 each Injection Syringes 1cc BD



SoftFoot Microfat™

The SoftTouch system uses the patient's own fat tissue ideal for several types of autologous grafting and osteopathic foot procedures.

- 1 each GEMS Tumescent Infiltrator 2.1mm x 15cm
- 2 each GEMS Carraway Harvester 2.1mm x 15cm
- 1 each GEMS Tulip Injector 0.7mm x 4cm
- 1 each GEMS Tulip Injector 0.9mm x 5cm
- 1 each Johnnie Snap 60cc
- 1 each Single-Use Sizing Transfer 1.2mm
- 1 each Single-Use Sizing Transfer 1.4mm
- 2 each Single-Use Anaerobic Transfer 2.4mm
- 2 each Harvesting Syringes 60cc BD
- 2 each Harvesting Syringes 10cc BD
- 4 each Injection Syringes 1cc BD

Tulip's patent pending NanoTransfer - taking fat transfer to the smallest level.



SoftTouch Microfat + TNF™

The SoftTouch system uses the patient's own fat tissue ideal for several types of autologous grafting procedures. This kit also adds the TNF (True NanoFat) component. This closed system helps size adipose tissue so that it is injectable with 27g and 30g needles. Select the kit by harvesting cannula.



SoftTouch Carraway Microfat + TNF™



SoftTouch Miller Microfat + TNF™

- 1 each GEMS Tumescent Infiltrator 2.1mm x 15cm
- 2 each GEMS Carraway or Miller Speed Harvester 2.4mm x 15cm
- 1 each GEMS Tulip Injector 0.7mm x 4cm
- 1 each GEMS Tulip Injector 0.9mm x 5cm
- 1 each GEMS Tulip Injector 1.2mm x 7cm
- 1 each Johnnie Snap 60cc
- 1 each NanoTransfer Generation II
- 1 each Single-Use Sizing Transfer 1.2mm
- 1 each Single-Use Sizing Transfer 1.4mm
- 2 each Single-Use Anaerobic Transfer 2.4mm
- 2 each Harvesting Syringes 60cc BD
- 2 each Harvesting Syringes 10cc BD
- 4 each Injection Syringes 1cc BD



SoftFoot Microfat + TNF™

The SoftTouch system uses the patient's own fat tissue ideal for several types of autologous grafting procedures. This kit also adds the TNF (True NanoFat) component. This closed system helps size adipose tissue so that it is injectable with 27g and 30g needles.

- 1 each GEMS Tumescent Infiltrator 2.1mm x 15cm
- 2 each GEMS Carraway Harvester 2.1mm x 15cm
- 1 each GEMS Tulip Injector 0.7mm x 4cm
- 1 each GEMS Tulip Injector 0.9mm x 5cm
- 1 each Johnnie Snap 60cc
- 1 each NanoTransfer Generation II
- 1 each Single-Use Sizing Transfer 1.2mm
- 1 each Single-Use Sizing Transfer 1.4mm
- 2 each Single-Use Anaerobic Transfer 2.4mm
- 2 each Harvesting Syringes 60cc BD
- 2 each Harvesting Syringes 10cc BD
- 4 each Injection Syringes 1cc BD

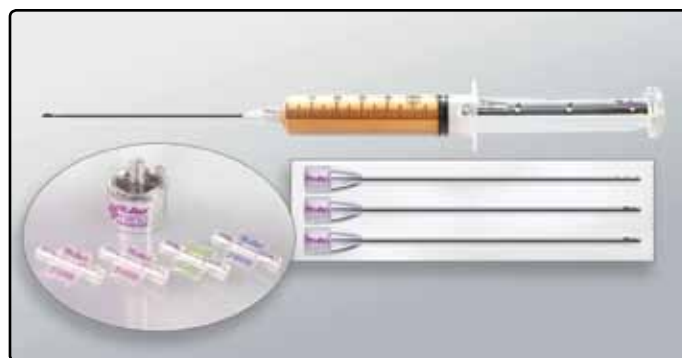


The Tulip Soft Harvest GOLD Kit™

GOLD: Gentle Out-patient Lipoaspirate Delivery

The Tulip Soft Harvest GOLD Kit™ contains everything needed to harvest and process fat to create Tulip's TRUE NanoFat™ (TNF).

1 each	GEMS Tumescant Infiltrator 2.1mm x 15cm
2 each	GEMS Carraway Harvester 2.1mm x 15cm
2 each	Miller OneSnap 60cc
1 each	NanoTransfer Generation II
1 each	Single-Use Sizing Transfer 1.2mm
1 each	Single-Use Sizing Transfer 1.4mm
2 each	Single-Use Anaerobic Transfer 2.4mm
2 each	Harvesting Syringes 60cc BD
2 each	Harvesting Syringes 10cc BD
4 each	Injection Syringes 1cc BD



Doctor Recommended Reusable Instrument Sets

Tulip has the great honor of working with leaders in the field of fat transfer in putting together recommended instrument sets. Order these sets, or use them as an idea-starter to customize a specialty set.

Marten Clinic Starter Set™

The Marten Set, designed and inspired by Dr. Timothy Marten, is a reusable and CellFriendly starter set for the discriminating facial surgeon.

1 each	Tumescent Infiltrator SuperLuerLok 1.6mm x 15cm
1 each	Tonnard Harvester SuperLuerLok 2.1mm x 15cm
1 each	Carraway Harvester SuperLuerLok 2.1mm x 15cm
1 each	Carraway Harvester SuperLuerLok 2.4mm x 20cm
2 each	Tulip Micro Injector SuperLuerLok 0.7mm x 4cm
2 each	Tulip Micro Injector SuperLuerLok 0.7mm x 5cm
2 each	Tulip Micro Injector SuperLuerLok 0.9mm x 5cm
2 each	Tulip Micro Injector SuperLuerLok 1.2mm x 6cm
1 each	Tulip Micro Injector SuperLuerLok 1.2mm x 8cm
1 each	Toledo V-Dissector SuperLuerLok 1.4mm x 6cm
1 each	Anaerobic Transfer, Luer to Luer 2.4mm
1 each	Tulip Z Stand, Small
1 each	Tulip NanoSpin Laboratory Centrifuge
1 each	Centrifuge Caps for LuerLok Syringes, 50 ct. - Sterile
1 box	Tulip Syringes BD 10cc LuerLock Box of 100
1 box	Tulip Syringes BD 1cc LuerLock Box of 100

Tonnard/Verpaele MicroFat Set™

This reusable and CellFriendly set includes instruments designed and recommended by Dr. Patrick Tonnard and Dr. Alexis Verpaele. It is a MicroFat instrument set perfect for fine facial sculpting and contouring.

1 each	Tumescent Infiltrator SuperLuerLok 2.1mm x 20cm
1 each	Tonnard Harvester SuperLuerLok 2.4mm x 20cm
1 each	Tulip Micro Injector SuperLuerLok 0.7mm x 5cm
1 each	Tulip Micro Injector SuperLuerLok 0.9mm x 5cm
1 each	JohnnieLok BD 10cc
1 each	JohnnieLok BD 20cc
1 each	Tulip Anaerobic Transfer Luer to Luer 2.4mm
1 each	Tulip Z-Stand, Small

The Ghavami Set™

This reusable CellFriendly set inspired and recommended by Dr. Ashkan Ghavami is designed for body contouring and buttock reshaping.

1 each	Mercedes 60cc 3.7mm x 20cm
1 each	Mercedes 60cc 3.7mm x 25cm
1 each	Spoon Tip Injector 60cc 3.0mm x 15cm
1 each	Spoon Tip Injector 60cc 3.0mm x 20cm
1 each	Decant Stand Anaerobic Transfer 60cc to Luer Lock



Visit TulipMedical.com to order a set today

Tulip's reusable sets can be modified to meet specific needs. Call 800-325-6526 to request modifications.

Tulip CellFriendly™ Harvesters



Carraway Harvester™

A spiral three-port design that is safe and effective for multi-plane adipose tissue harvesting, very popular for small volume procedures preformed using local anesthesia.



Miller Speed Harvester™

A six port configured CellFriendly harvester that yields maximum tissue volume in minimal time. Simply revolutionizing.



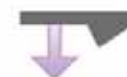
TriPort Harvester™

A triple port harvester, ideal for obtaining small aliquots of adipose tissue from a single plane.



Tonnard Harvester™

A unique and effective multiport harvester with elevated sharp microports, very effective for harvesting through fibrous tissue. The 12 or 20 port-configuration allows for efficient harvesting both on the forward and backward strokes.



Sorensen Harvester™

A less aggressive multiport harvester with beveled microports. The 12 or 20 port-configured harvesters allow gentle, yet very efficient harvesting both on the forward and backward strokes.



Trivisonno Micro Harvester – Signature Series™

New! Specifically designed for selective and safe removal of the SVF-rich superficial fat layer in contact with the deep dermis.

Tulip CellFriendly™ Specialty Instruments



Flap™

The Flap is primarily used as an undermining dissector, followed by harvesting and/or injection.



Toledo V–Dissector™

This cannula is specifically designed for use in the superficial compartment. The cutting notch is very useful for releasing dense fibrous tissue, such as acne scars and nasolabial folds.

Now available portless - see below



Bensimon Micro Sculptor – Signature Series™

New! Introducing the Bensimon Micro Sculptor. Designed by Dr. Richard Bensimon, this modification of the Tonnard harvester is ideal for facial liposuction and inducing skin contraction. The small holes ensure a smooth contour and the small diameter enables entry with a needle puncture leaving no mark. This allows for multiple entries for precise contouring of the neck and gynecomastia



Pocar™

The Pocar is a percutaneous punch that is used to make a circumferential incision prior to infiltration and tissue extraction. It is designed to maintain a tight seal while minimizing scarring.

Two sizes: Large for body 4.6mm • Small for face 3.0mm

Tulip CellFriendly™ Injectors



Tulip Injector™

Featuring Tulip Medical's side port blunt tip design that passes through soft tissue effortlessly, while maintaining the integrity of the vascular structure. A workhorse for small volume injection.



J.W. Little Injector™

An innovative blunt design with one smaller round port size for precise delivery of microfat. This is especially useful in the periorbital region and the vermilion skin border of the lips.



Spoon Tip Injector™

A blunt spoon shaped tip designed with a larger port for rapid injection of larger volumes, a groundbreaking breast and buttock workhorse.



Always Start with Tulip CellFriendly Infiltration



Tumescent Infiltrator™

The multi-spiraled port configuration allows even distribution of fluid, used specifically for the infusion of tumescent solution and for hydraulic dissection.



Tulip Curved Injectors™

Tulip's Curved Injection Cannulas are designed to make it easy to rapidly change injection planes by rotating the orientation of the port.

Tulip CellFriendly™ Cannulas



Standard™

This is the most common cannula design for adipose tissue removal. The single port is located 180 degrees from the thumb rest on the hub.



Mercedes™

This circumferential three port configuration is effective for multi-plane adipose tissue harvesting.



Cobra Bibevel™

The two port, tapered tip cannula is very effective when working through very dense tissue, more aggressive than the Standard, Pyramid, and Mercedes.



Pyramid™

This commonly used design has three ports located 180 degrees from the thumb print. It is a slightly more aggressive cannula than the Standard.

Standard Instrument Dimensions*

	TUBING DETAIL	GAUGE	LENGTH
NANO			
• 0.3mm	0.51mm OD(0.31mm ID)	25GA	XXcm**
• 0.5mm	0.64mm OD(0.43mm ID)	23GA	XXcm**
• 0.7mm	0.91mm OD(0.66mm ID)	20GA	XXcm
• 0.9mm	1.07mm OD(0.81mm ID)	19GA	XXcm
MICRO			
• 1.2mm	1.27mm OD(0.98mm ID)	18GA	XXcm
• 1.4mm	1.47mm OD(1.21mm ID)	17GA	XXcm
• 1.6mm	1.65mm OD(1.36mm ID)	16GA	XXcm
MACRO			
● 2.1mm	2.11mm OD(1.70mm ID)	14GA	XXcm
● 2.4mm	2.41mm OD(1.96mm ID)	13GA	XXcm
● 3.0mm	3.05mm OD(2.39mm ID)	11GA	XXcm
● 3.7mm	3.76mm OD(3.00mm ID)	09GA	XXcm
● 4.6mm	4.57mm OD(3.81mm ID)	07GA	XXcm

*Key: GA Gauge, OD Outside Diameter, ID Inside Diameter

** Only available in single-use

Get the Tulip Advantage using CellFriendly™ Instruments!

All of Tulip's instruments are finished with Tulip's exclusive CellFriendly Coatings. This finish gives the instrument a smooth, lubricious action. Reduced friction creates less stress and damage to the tissue for better outcomes and less fatigue to the surgeon during the procedure.



Syringe Connection or Machine Connection Tulip Instruments Provide Superior Results



60cc Hub™



Tulip SuperLuerLok™
U.S. Patent Number 6,569,118



Luer Lock



Tulip SuperLuerLok™

U.S. Patent Number 6,569,118

Get more security and control when using Tulip Instruments. The SuperLuerLok's outer hull provides a tight seal on the luer connection ensuring better vacuum and stability.



Power Cannula™

Order Tulip cannulas and harvesters as a complete one-piece instrument ready to use with an aspiration machine for liposuction and large volume fat harvesting procedures.

Tulip Power Injector (PI4)

Power and control in the palm of your hand



Tulip Power Injector (PI4)™

The Tulip Power Injector (PI4) allows the surgeon to re-inject soft tissue through large or small diameter injectors with very little effort and maximum control.

The Tulip Power Injector (PI4) will fit the following syringes.

Small Barrel

- 10cc BD Luer Lock
- 10/12cc Monoject Luer Lock
- 10cc Monoject for Oral Medication
- 20cc BD Luer Lock
- 20cc Monoject Luer Lock

Large Barrel

- 60cc Toomey Tip
- 60cc Nipro Luer Lock
- 60cc Monoject Slip Tip

Tulip Power Injector (PI4) - Injection Volume Chart

Small Barrel	Per gun click	Per full pull (4 clicks)
10cc BD Luer	0.2ml	0.8ml
10/12cc Monoject Luer Lock	0.25ml	1.0ml
10cc Monoject for Oral Medication	0.25ml	1.0ml
20cc BD Luer Lock	0.4ml	1.6ml
20cc Monoject Luer Lock	0.42ml	1.7ml
Large Barrel	Per gun click	Per full pull (4 clicks)
60cc Toomey Tip	0.8ml	3.2ml
60cc Nipro Luer Lock	1.1ml	4.4ml
60cc Monoject Slip Tip	0.92ml	3.7ml



Tulip®
GEMS
 Single-Use • CellFriendly

Premium Single-Use CellFriendly Instruments™

Tulip's CellFriendly technology is now available in premium, pre-sterilized, single-use instruments. Tulip GEMS eliminate risk of cross contamination while providing high performance. Tulip GEMS glide easily through tissue and resist clogging. Tulip GEMS – simply the best.



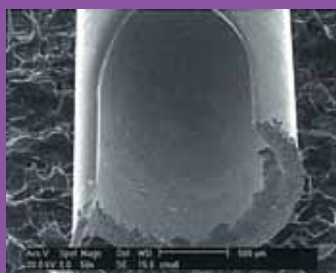
Experience more security and control when using Tulip GEMS Instruments.
 Another advantage only from Tulip!

Why Tulip Single-Use Instruments?

See The Difference

Over time reusable cannulas can corrode and become more porous, creating potential harbors for microbial growth. Now with Tulip's Premium, Single-Use GEMS, related risks of infection and cross-contamination are virtually eliminated - Tulip quality in a single-use device.

50 X Magnification



Tulip Disposable Cannula
 Harvester 2.1mm

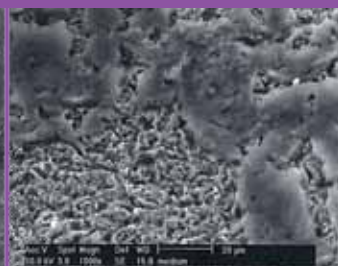
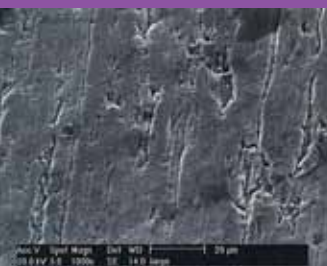
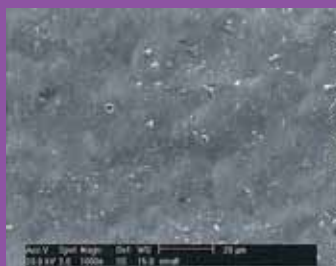


Non-Tulip Reusable Cannula used 5 times.
 Harvester 3mm, Streaks are believed to be caused by brushing/cleaning process



Non-Tulip Reusable Cannula used 10 times.
 Harvester 3mm, The post-cleaning granule material included protein residue.

200 X Magnification



Tulip GEMS Harvesters

Tulip®
GEMS
Single-Use • CellFriendly



GEMS Carraway Harvester™

A spiral three-port design that is safe and effective for multi-plane adipose tissue harvesting, very popular for small volume procedures performed using local anesthesia.



GEMS Miller Speed Harvester™

A six port configured CellFriendly harvester that yields maximum tissue volume in minimal time. Simply revolutionizing.



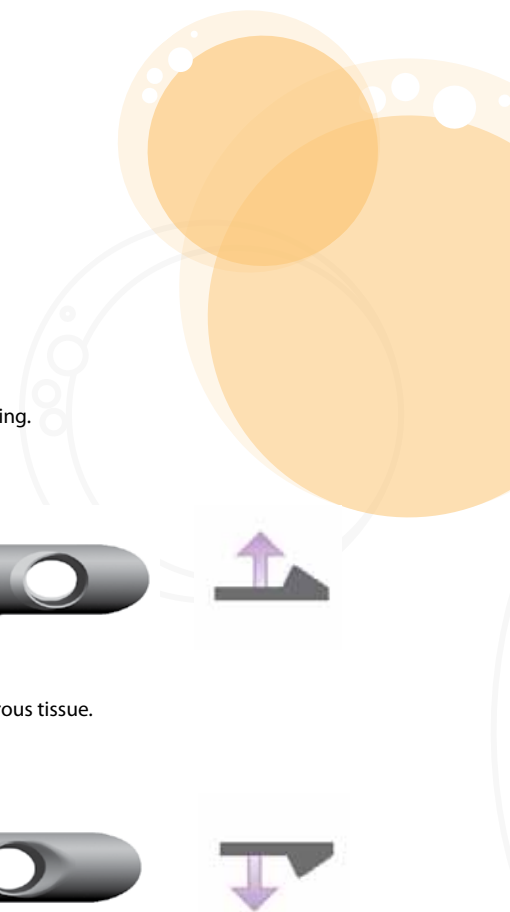
GEMS Tonnard Harvester™

A unique and effective multiport harvester with elevated sharp microports, very effective for harvesting through fibrous tissue. The 12 or 20 port-configuration allows for efficient harvesting both on the forward and backward strokes.



GEMS Sorensen Harvester™

A less aggressive multiport harvester with beveled microports. The 12 or 20 port-configured harvesters allow gentle, yet very efficient harvesting both on the forward and backward strokes.



Tulip GEMS Injectors



GEMS Tulip Injector™

Featuring Tulip Medical's side port blunt tip design that passes through soft tissue effortlessly, while maintaining the integrity of the vascular structure. A workhorse for small volume injection.



GEMS Spoon Tip Injector™

A blunt spoon-shaped tip designed with a larger port for rapid injection of larger volumes, a groundbreaking breast and buttock workhorse.

Tulip GEMS Infiltration

Always Start with Tulip CellFriendly Infiltration



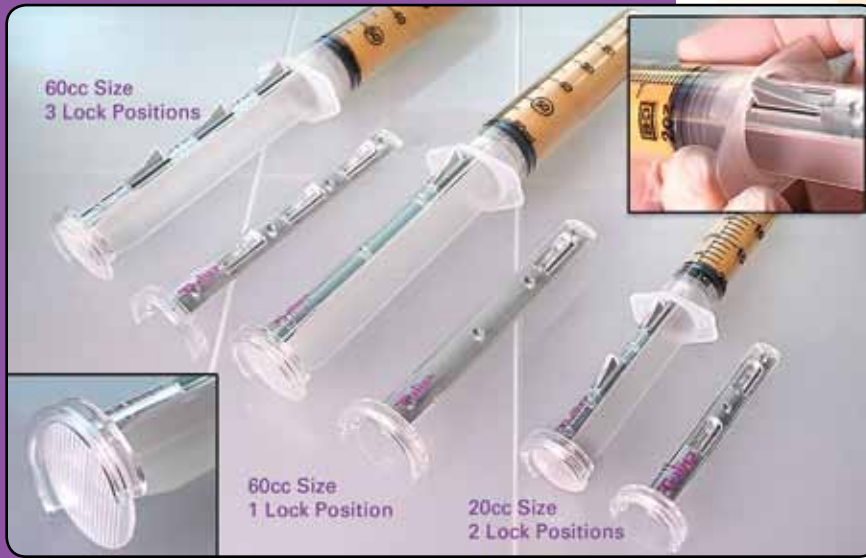
GEMS Tumescence Infiltrator™

The multi-spiraled port configuration allows even distribution of fluid, used specifically for the infusion of tumescent solution and for hydraulic dissection.



Tulip®
GEMS
Single-Use • CellFriendly

Tulip GEMS Accessories



Johnnie Snap™

Miller OneSnap™

Patent-pending Johnnie Snap and Miller OneSnap syringe locks are designed to maintain vacuum at variable pressure levels, from low to high. With a newly designed plunger clip, this lock becomes one with the plunger delivering effortless vacuum pressure.

The Johnnie Snap has multiple lock positions for incremental low pressure vacuum.

- 20 cc Johnnie Snap fits BD and Monoject Syringes.
- 60 cc Johnnie Snap and Miller OneSnap fits only BD Syringes.



NanoTransfer™ Generation II

The patent-pending Tulip NanoTransfer is an essential component in the NanoFat Protocol. Tulip's proprietary closed system delivers adipose tissue that is injectable with 27G and 30G needles.

Single-Use Anaerobic and Sizing Transfers (below) are also a component of the GEMS NanoTransfer Protocol.



Single-Use Transfers

Single-Use Anaerobic and Sizing Transfers™

Tulip's single-use, pre-sterilized transfers are designed for easy, clean, closed-system transportation of adipose tissue between luer lock syringes.

Single-Use Anaerobic and Sizing Transfers are also a component of the NanoTransfer Protocol.

Sizes: 1.2mm • 1.4mm • 2.4mm



Advanced Tissue Processing

Tulip®  **nano**

Taking Fat Transfer
To the Smallest Level



NanoTransfer™ Generation I

Tulip Medical's Patent-Pending NanoTransfer™, designed to take fat to the smallest level. The proprietary closed system delivers adipose tissue that is injectable with 27g and 30g needles.

The NanoTransfer Set Generation I contains all of the essential items needed for the NanoFat protocol.

- NanoTransfer Generation I
- NanoTransfer Cartridges (pack of 5)
- Sizing Transfer (GEMS or Reusabale) Luer to Luer 1.2mm
- Sizing Transfer (GEMS or Reusabale) Luer to Luer 1.4mm
- Anaerobic Transfer (GEMS or Reusabale) Luer to Luer 2.4mm

All Anaerobic Transfers and NanoTransfer Cartridges are available pre-sterilized.

Tulip Anaerobic Transfers and Emulsifiers



Anaerobic and Sizing Transfers™

Anaerobic transfers are used to prepare and transfer extracted tissue for re-injection. The anaerobic transfer is also an important component of the Tulip Nano Fat System for preconditioning tissue for use in the Tulip NanoTransfer.

- Sizing Transfer Luer to Luer 1.2mm
- Sizing Transfer Luer to Luer 1.4mm
- Anaerobic Transfer Luer to Luer 2.1mm



Anaerobic Transfer Decant Stand™

Anaerobic transfers are used to prepare and transfer extracted tissue for re-injection. The Decant Stand design also allows for a natural gravity decant of extracted tissue.



- 60cc toomey to Luer Lock
- Luer Lock to Luer Lock

Tulip Syringe Locks

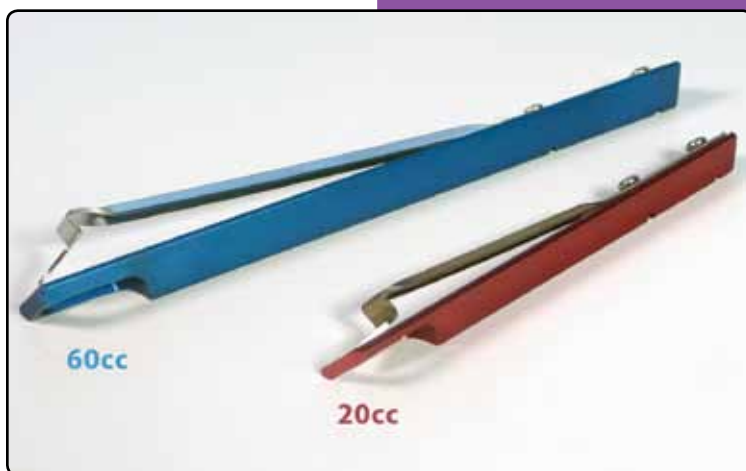


Available in six popular syringe sizes.

- 60cc Monoject
- 60cc BD
- 20cc BD
- 20cc Monoject
- 10/12cc Monoject
- 10cc BD

JohnnieLok™

The JohnnieLok holds the plunger under vacuum for easy syringe harvesting. The plunger is drawn back to the desired pressure level then twisted and locked securely.



SnapLocks™

These syringe snap locks fit into the plunger flanges of the syringe. When the plunger is pulled out, the lock snaps open on the barrel lip, thus holding the syringe under vacuum.



Power Adaptor™

The Tulip Power Adaptor modifies the cannula and the syringe for use with an aspirating machine.

- 60cc Monoject
- 20cc BD
- 20cc Monoject

Syringe Decanting



Tulip Z Stands – Form Follows Function

No Assembly Required • Easy to Clean • Virtually Indestructible

Tulip Syringe Line

Syringes for use with our liposuction cannulas, micro injectors and accessories.



- A. 60cc Toomey Monoject Syringe - box of 20
- B. 60cc Luer Monoject Syringe - box of 40
- C. 20cc Luer BD Syringe - box of 40
- D. 10cc Luer BD Syringe - box of 100
- E. 1cc Luer BD Polycarbonate Syringe - box of 100

Syringe Tip Caps



- A. Luer Lock Syringes (Sterile)
- B. Luer Lock Syringe Centrifuge Caps (Sterile)
- C. Reusable Toomey Tip (non-sterile)

Tissue Processing



Tulip NanoSpin™ Advance Small-Volume Tissue Processing

A high quality small-volume centrifuge designed by Tulip for advanced tissue processing directly inside a closed system syringe barrel.

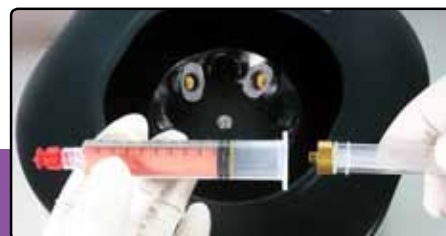
The NanoSpin's rotor securely holds eight 10cc syringes.

The NanoSpin has an autoclavable rotor and syringe holders that make sterile processing simple.

- Rotor holds eight 10cc syringes • 3500 rpm • Digital speed and time
- 1534 Max G-force 12V with a DC motor • Made in the USA

nanoTM SPIN

- The Tulip NanoSpin accommodates up to eight 10cc syringes including caps and Tulip Crowns.
- Speed up your workflow and increase efficiency
- Decrease contamination
- Proper separations
- Designed as a closed system to be used with 10cc syringes incorporating Tulip Crowns



Advanced Closed-System Tissue Processing



60cc Monoject

20cc BD

10cc BD

Tulip Crown™

A tiny device with a huge impact - Tulip Crowns change the centrifuge game. The Crown is designed to keep syringe contents in a virtually anaerobic atmosphere during centrifuging. Simply attach a Crown to the syringe plunger, harvest, then twist the plunger off. The Crown also has a bonus, self-sealing extractor port for cleanly removing contents from any layer of centrifuged tissue. Patent-Pending

Tissue Decanting

Single-Use Large Volume Decanting Canisters



Tissue-Trans® Filtron Units

3 sizes available 500cc, 1000cc, 2000cc
Closed system with proven filtering and fat viability,
no centrifuge needed.



Cleaning and Sterilization



Tulip Soft Picks™

Cleaning even the smallest CellFriendly micro injectors is quick, easy and gentle. Guaranteed not to score, abrade or contaminate, Tulip Soft Picks are the ideal single-use cleaning solution for smaller diameter cannulas and microinjectors. Autoclavable for use in the sterile field, if desired.

- Micro - For cleaning 0.7mm & 0.9mm Cannulas, Length-10cm Pack of 10
- Small - For cleaning 1.2mm, 1.4mm & 1.6mm Cannulas, Length-15cm Pack of 10
- Medium - For cleaning 2.1mm, 2.4mm & 3.0mm Cannulas, Length-25cm Pack of 10



CellFriendly Instrument Cleaning Brushes™

These brushes are specially designed to clean CellFriendly Cannulas. Soft nylon bristles clean the lumen without damage to the CellFriendly surface. Use only Tulip Cleaning Brushes and Tulip Soft Picks on Tulip cannulas to maintain the CellFriendly benefits.

- Small - For cleaning 1.2, and 1.4mm cannulas, 10 Brushes
- Medium - For cleaning 2.1, 2.4, and 3.0mm cannulas, 10 Brushes
- Large - For cleaning 3.7 and 4.6mm cannulas, 5 Brushes
- XLong - For cleaning Power Handle cannulas

Tulip Gold Standard Autoclave Trays™

Tulip's new Gold Standard autoclave trays are custom-designed to protect, house and store Tulip Gold Standard Sets and individual Tulip instruments. Additional top mats available.

- Medium - Micro and Facial Cannulas (15.24 x 25.40 x 4.45 cm)
- Large - Facial and Body Cannulas (15.24 x 40.64 x 4.45 cm)





Delivering the benefits of fat to millions...

Call 800-325-6526 • Order online TulipMedical.com

Tulip Medical Products
4360 Morena Blvd., Suite 100
San Diego, CA 92117

Tulip Medical Products is a division of Black Tie Medical Inc.
Tulip product names and logos are trademarks of Black Tie Medical Inc.
and may not be used without permission.
US Patent # 6,569,118 All Rights Reserved © 2020 Black Tie Medical Inc.